

**NORTH
POINTE**

TOWNHOMES

at Limestone Hills

**The
"VIRGINIA
TWINS"**

By: BLENHEIM  HOMES

NORTH POINTE *at Limestone Hills*

Standard Features for the "VIRGINIA TWINS"

Community Characteristics

- North Pointe consists of 108 acres of which 73 wooded acres (2/3) are devoted to open space
- Part of the exceptionally well maintained Limestone Hills planned unit development
- Highly regarded Red Clay School District
- Old world style street lighting
- One half mile to Pike Creek Valley shopping Center
- One half mile to Delcastle Recreation Area and Delcastle public golf course

Exterior Features

- Most lots include natural walkout basements
- Colonial style siding
- Maintenance free aluminum clad trim
- Aluminum gutters and down spouts
- Architectural grade dimensional roof shingles with 25 year warranty
- Garage door opener outlet
- Polished brass door package, including handles and kick plate
- Asphalt driveway
- Treated wood deck
- Two conveniently located frost proof exterior hose bibs
- Two weather protected G.F.I. exterior electrical outlets
- Professionally designed landscaping includes:
 - Sodded front lawn with shrubbery package
 - Fine finish grading and seeding on side and rear yard

Interior Features

- From 2,300 square feet of living space on main levels (not including lower level)
- First floor with 9' ceiling height
- Vaulted ceiling in Belvoir Master Bedroom and Alexandria Family Room

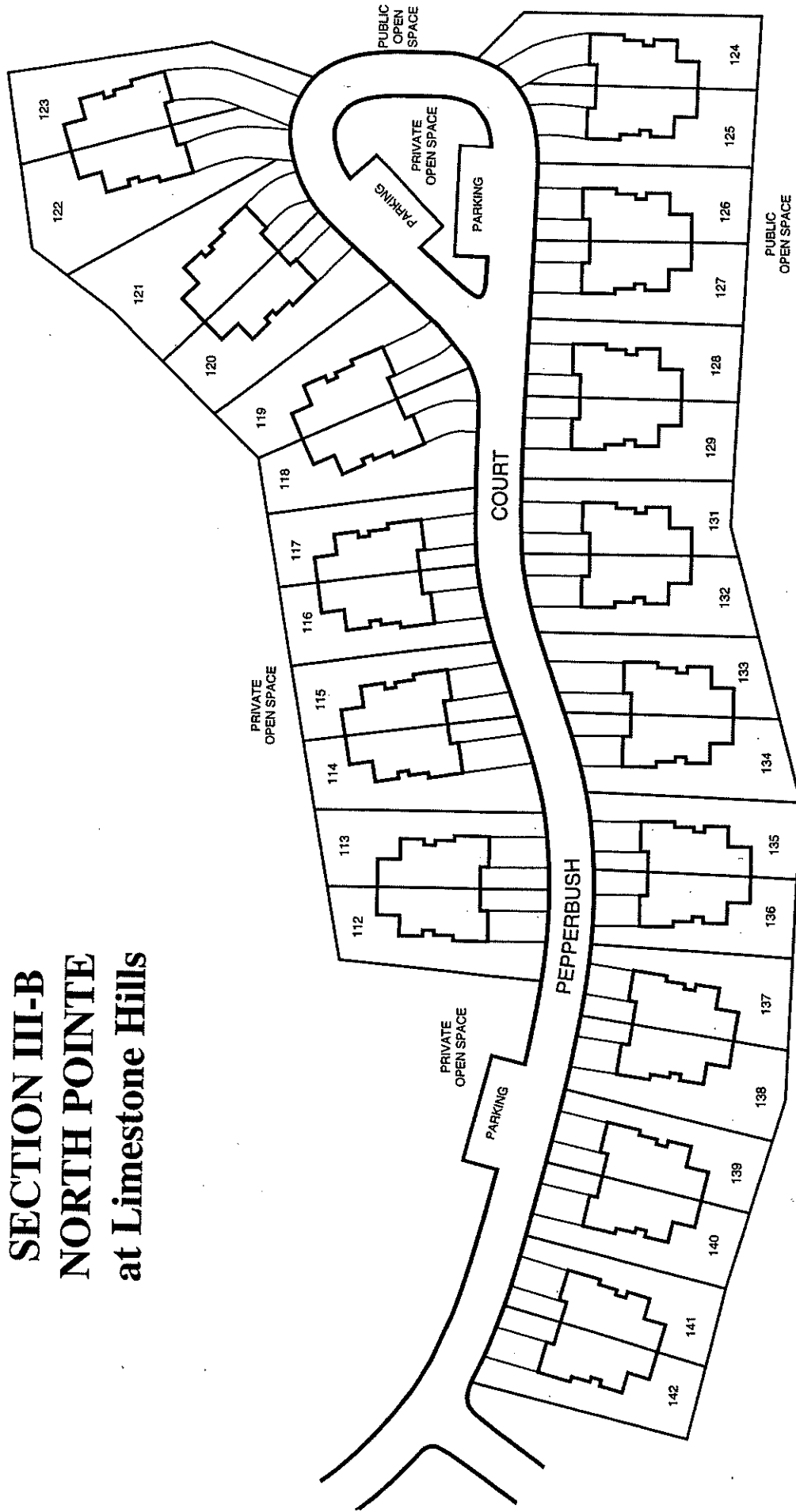
Interior Features, continued

- Professionally planned step saving kitchen includes:
 - Center island with breakfast bar
 - Variety of designer cabinet styles
 - Self cleaning-electric range and range hood with light and two speed fan
 - Time saving automatic dishwasher
 - Garbage disposal
 - Laminate counter top with choice of designer colors
 - Designer no-wax flooring
- Wood burning fireplace in living room (family room of the Alexandria Model)
- Luxurious Master suites with inviting master baths; featuring garden soaking tubs
- Foyer with hardwood floor entry
- First floor powder room with ceramic tile floor and pedestal sink
- Easy clean tub-shower unit
- Stairway with painted millwork
- Wall to wall carpet in choice of color
- Colonial six panel doors throughout
- Door bell
- Smoke detector on each floor (per code)
- Custom wire shelving in all closets
- Two pre-wired cable TV outlets
- Designer lighting fixture package

Energy Saving Features

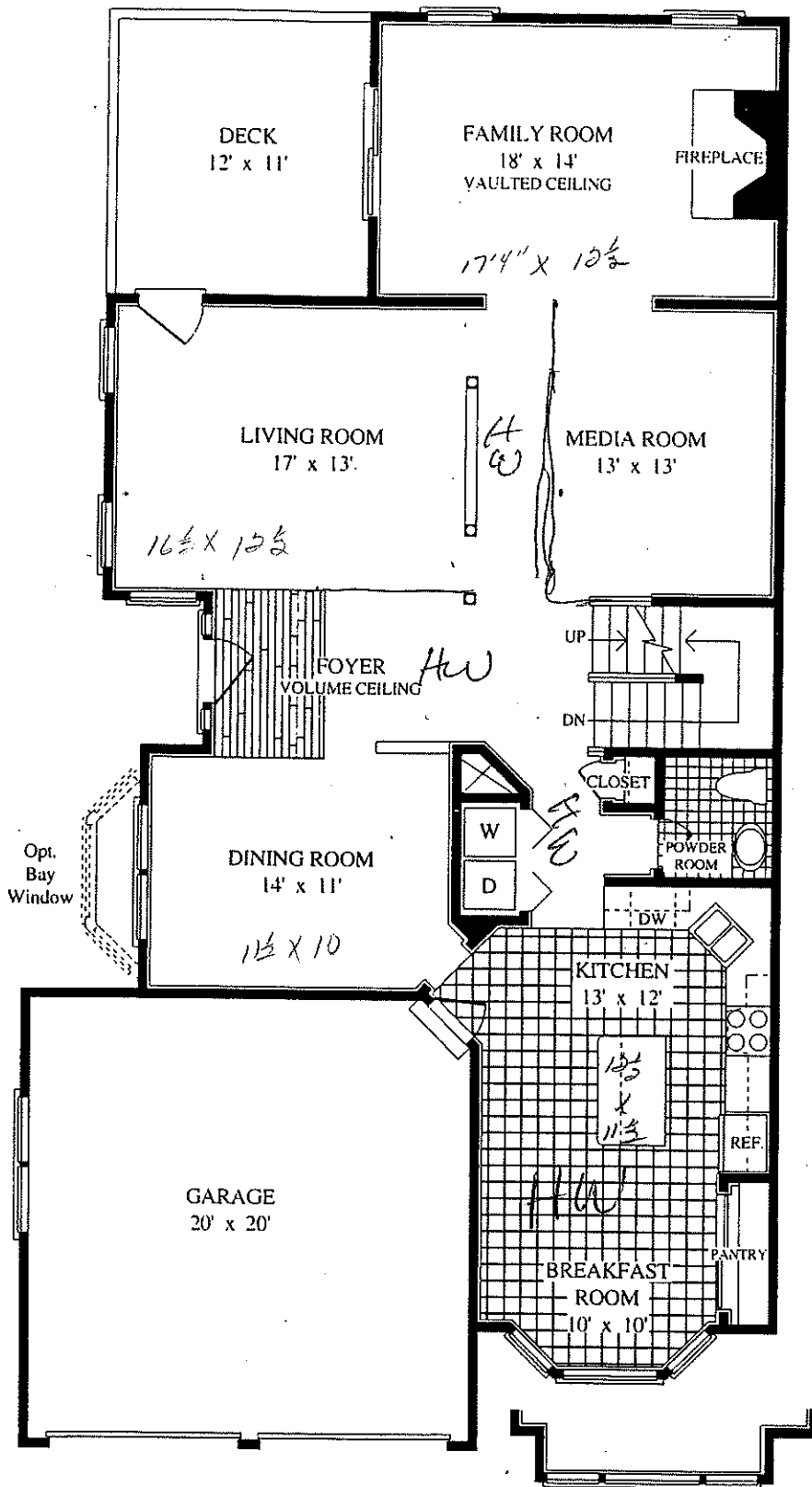
- High efficiency natural gas heat and central air conditioning
- 200 amp electric service
- Maintenance free vinyl double insulated windows which tilt in for easy cleaning with built in grids and screens
- Steel insulated front door, thermal break sliding glass door in the rear with built in grids and screen door
- Family size energy efficient electric water heater

**SECTION III-B
NORTH POINTE
at Limestone Hills**

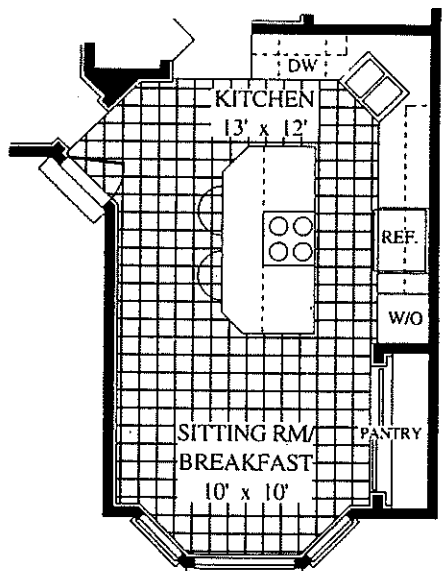


BLLENHEIM HOMES™

4550 New Linden Hill Road • Suite 152, Linden Park • Wilmington, DE 19808



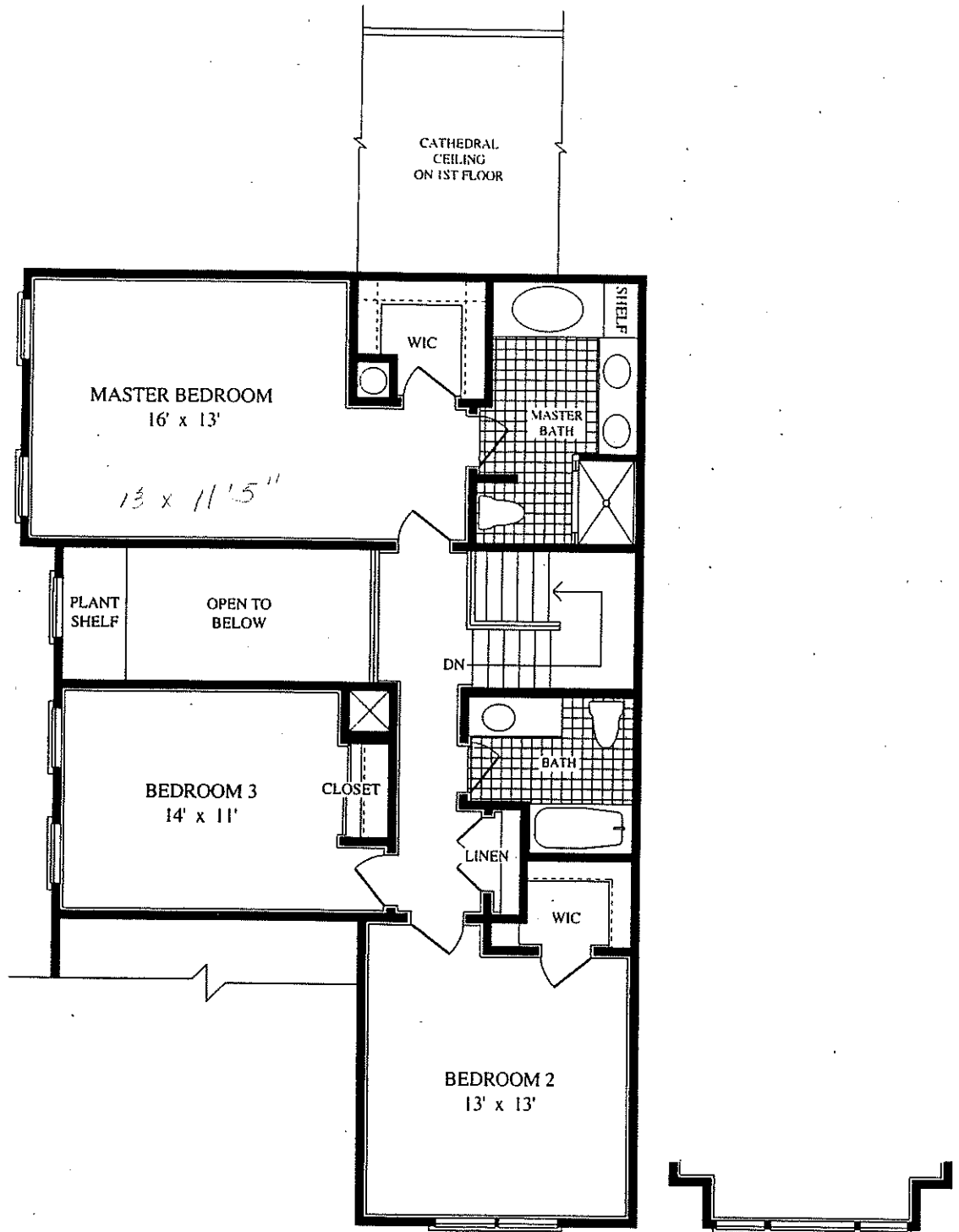
Optional Gourmet Kitchen



First Floor Plan - Left Unit

Right Unit

The Alexandria



Second Floor Plan - Left Unit

Right Unit

Plan B